

THE EAGLE

CHIPPEWA COUNTY HISTORICAL SOCIETY



SPEAKS

SEPTEMBER 2007

“OLD ABE”

Inside this Issue:

Ancient History in Cadott’s Riverview Park3

Calendar 3

CCGS Historical Events2

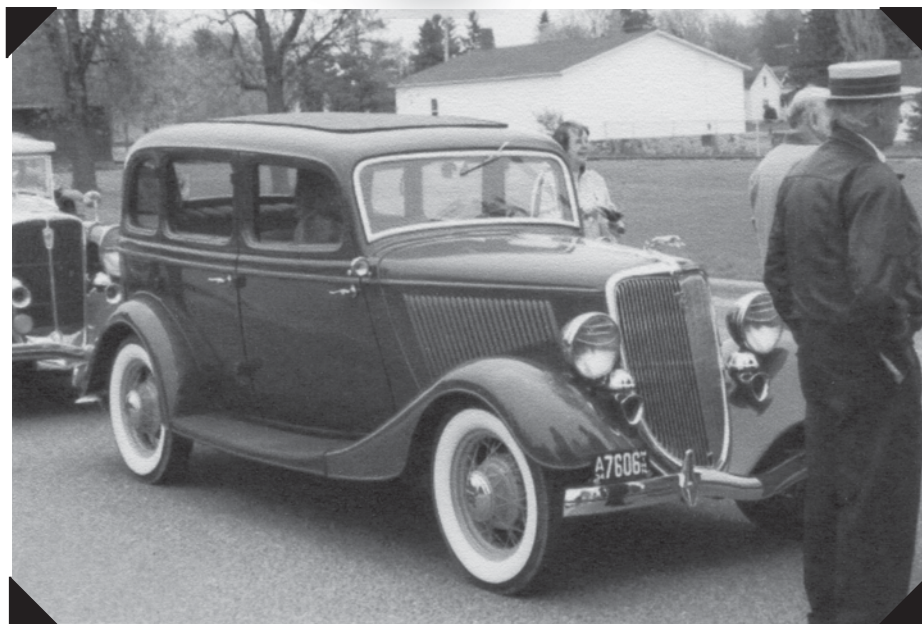
Committee Members 6

Donations 7

Do You Belong to a Gang?1

President’s Letter 4

Stanley Area Historical Society 2

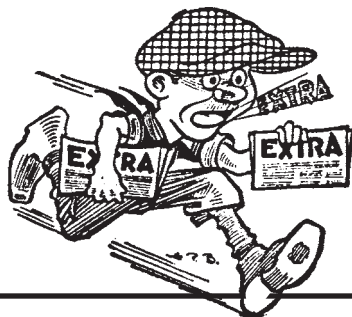


Do You Belong to a Gang?

ARLEY ENGEL

Having received an invite in the mail to “Come Join the Fun & Excitement” of a Cushman Motor Scooter Slow Tour scheduled for June 17, 2007. The staging area to be at Paul & Joan Omans. With breakfast and repair time set for 9:00 am. and departure time set for 10:00 am. This was to be a Mystery Tour with the route having been test run at an earlier time by the Omans.

After eating a hearty breakfast, it was time to line up the scooters. This ride was open to antique cars and motorcycles. So by the time we got everyone lined up, there was over 20 units in our caravan. We headed East towards Chippewa Falls past the city shops. There was a lot of traffic in this area do to the “Fat Far Folks” getting ready for the annual tubing of the Chippewa River. From here we headed to Irvine Park, entering off Bridgewater Avenue taking the bridge over Duncan Creek, passing the bear den, the buffalo and the elk. Then turning along side the Sunny Valley School and heading to the area of the Rumble Bridge. From here we went out the north end of the park and east on County Highway W over to the Four Corners. We went north on 178 to the Mallard



September 19

Semi-Annual Membership Meeting of the Chippewa County Historical Society
 Activity Building Irvine Park
 5:30 p.m. Pot Luck Dinner
 6:30 p.m. Membership Meeting

LOCAL NEWS

STANLEY HISTORICAL SOCIETY

Stanley Hosts West Central Regional Convention on September 22

DAVID JANKOWSKI, REPORTER

Since the formal opening of our museum for the season the weekend of June 2 and 3, we have been busy with visitors and hosting events. Our 2007 exhibits feature the Village of Boyd, the Town of Delmar and Stanley 100 Years Ago — 1907. Many interesting artifacts and souvenirs of Boyd are featured. Marcy Ruff curator of the Boyd history room located at the Boyd Village Hall has served as a consultant on Boyd history. Bev Hompe, ably assisted by Connie Pozdell, has again led the development of our 2007 exhibits. Volunteers, under Bev's direction, have also provided a great deal of assistance. The museum located at 228 Helgerson Street is open Saturdays and Sundays 1-4 p.m. during August and on Sundays in September.

During winter the Stanley museum underwent some remodeling and new construction. New front doors in the original building have been installed, new bulletin board space in the original building has been added and the former cloakrooms have been made into more user friendly storage space.

The Stanley museum had several presentations and special events during June and July. On June 9, Marcy Ruff gave a well received presentation on the "Early History of Boyd." On June 23, Stanley hosted the Clark County Historical Society, which held their semi-annual meeting at our museum.

CONTINUED ON PAGE 5



A couple of gang members — do they look dangerous to you?

COVER STORY CONTINUED

Resort where we were welcomed by the owner Bev Chartier and many of her campers came to look at our menagerie of old cars, scooters and cycles. After a few repairs and some needed refreshments we headed on the old part of Highway 178 to Jim Falls. There were some machines that had broke down on this section of the tour. Which should be expected, as most of these rigs are 50 years old or older! After the needed repairs were done we drove to the restaurant in Jim Falls for lunch. After getting our bellies filled and reminiscing with friends from way back when, we all met outside and had our pictures taken by our machines. There was quite a crowd of onlookers gathered in the parking area. From here we gassed up at the River Country Coop gas station. Our trip back to Omans took us on the back roads along the East side of the Elks Country Club and over County S Bridge by Native Bay. We turned off County S at the County I intersection, then over to the Seymour Cray Boulevard, crossing the Chippewa River to the County J corner, then on back roads to the Oman Ranch.

By now you have to be wondering "what does this have to do with a gang? The answer is . . . The Cushman Club is known as "The Dreaded Cushman Gang".

That's all for now from The Little House on the Wheaton Prairie.☺

CHIPPEWA COUNTY GENEALOGICAL SOCIETY: HISTORICAL EVENTS

ROGER N. WHITING

On Tuesdays, member volunteers of the *Chippewa County (WI) Genealogical Club* are available to assist all who visit the Area History Center library seeking genealogical assistance. Recently several persons asked about the history of the Chippewa County Genealogical Society and as this is my first article for the newsletter, I thought it might be worthwhile to summarize CCGS organizational history.

1980

President: Betty Plombon

On 19 April 1980, the Chippewa Falls Genealogical Club was organized with 16 members. By February 1981, the name had been changed to the Chippewa Valley Genealogical Society; and by June 1981 to its present name. The members met regularly discussing genealogy principles and techniques. They also began to collect genealogical information about Chippewa County residents including enumeration of Chippewa County cemetery tombstones.



This picture of the Depot in Chippewa in the early 1900s could be called a history of transportation. It includes a horse and wagon, steam locomotive and gasoline powered truck.

Ancient History in Cadott's Riverview Park

JUDY GILLES

Imagine a mountain range vista 10 miles high stretching northeast from Wyoming through Wisconsin in southeastern Ontario. Imagine other vistas of vast shallow seas, mile high ice sheets, rivers flowing north to Hudson Bay or standing near the equator. At one time in our earth's history you could have seen all these vistas in Cadott. We have had mountains (1800 mya), seas, north flowing rivers, been located at the equator instead of half-way between the equator and the north pole (600 mya) and numerous polar ice caps over the last 1 mya. (Note: mya stands for million years ago)

A brief explanation of our vast geological history is now available at Riverview Park on the banks of Yellow River. Dr. Paul Myers, retired geology professor at UW-Eau Claire frequently studied the geology around the Cadott area. Dr. Myers designed 4 interpretive geological signs to provide a concise overview for community members and visitors. Two signs are located in the upper park and two signs are below the dam on the north side of the Main Street bridge.

An exciting part of this history can still be seen below the Cadott Dam. The Precambrian rocks exposed along the Yellow River contain elements of geological history not seen elsewhere and are well exposed. The rocks are dark grey amphibolites and their age is about 1,850 million years. The signs below the dam will help visitors locate the rocks.

CONTINUED ON PAGE 6

CALENDAR

Place these dates on your calendar

September 18

No September Board of Director Meeting

September 19

Semi-Annual Membership Meeting of the Chippewa County Historical Society, Activity Building Irvine Park
5:30 p.m. Pot Luck Dinner
6:30 p.m. Membership Meeting

September 22

2007 West Central Regional Convention, Stanely, WI

October 13

2007 Southwestern Regional Convention, Sparta, WI

October 16

Historical Society – Board of Directors, 9:15 a.m. History Center

October 26-27

Joint Local History and Historic Preservation Conferences, Eau Claire, WI

November 6

Last date to get material in for the next newsletter

1981	1991	1994
<p>In February 1981 began publishing a newsletter, <i>The Newsletter</i> that has been continued to this date. PERSI, or the Periodical Source Index, has indexed the newsletter since 1981. PERSI is the largest subject index to genealogical and historical periodical articles in the world. It is maintained by the Allen County Public Library, Fort Wayne, IN.</p>	<p>The CCGS genealogical library was moved to the CCHS Area History Center library in 1991.</p>	<p>CCGS was incorporated as a not-stock, not-for-profit organization in the state of Wisconsin on 8 July 1994. Later, CCGS was initially recognized as a 501(c)3, not-for-profit organization by the US Internal Revenue Service on 26 April 1995 with final recognition on 24 April 1999.</p>

The Eagle Speaks is published quarterly by the Chippewa County Historical Society, a non-profit organization established to promote and stimulate historical interest in Chippewa County, Wisconsin.

Mail any comments or future articles to 123 Allen St., Chippewa Falls, WI 54729. 715-723-4399.

Chippewa County Historical Society
123 Allen St., Chippewa Falls, WI
Open on Tuesdays | 9am-4pm

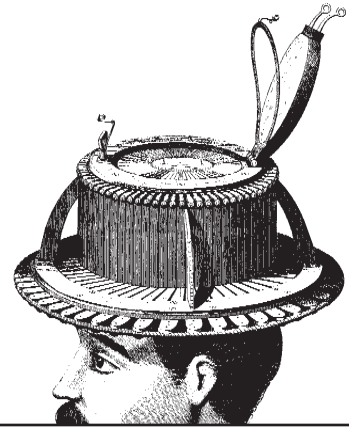
FEATURED ARTIFACT



This music box was made in Switzerland and belonged to Edward Rutledge. The Historical Society had it restored to working order. Its rich musical tones come from a metal roll and includes a bass drum, six bells and a wood block all playing along. Besides listening it is fascinating to watch all the mechanisms work.

Watch for the "featured artifact" in upcoming newsletters.

A Message From Your President



The computer age is coming to the Chippewa County Historical Society. While our Treasurer and Photograph Archivist have been using computers to assist them in their responsibilities we are far from utilizing this important tool through out all areas of the Society. Our goal is to have five computers networked to help us with all the record keeping required to preserve our counties rich history. John Hancock of Spectrum Industries has volunteer to help us get more computers and network all our computers. We acquired a computer from The Open Door Clinic when they upgraded their computers. This computer allows us to begin putting all the information about our artifacts on the computer to make it very accessible to all. The first step was to load up and use an Excel spread sheet that Freddie and Wayne Jensen had created listing basic information about the more than 5500 artifacts, books and manuscripts in the Society's collection. Changes are being made to allow this data to be sorted by donors last name and by general categories. These general categories such as logging, military, people, implements to name a few, will allow a person to reduce the records they have to search through to find the item they need.

Next came a search for software that other museums and historical societies are using. Susan McCloud of the Chippewa Valley Museum suggested the software they use called PASTPERFECT. After looking at this software used by over 5000 medium to small sized museums we decided it was what we needed. The Board of Directors approved this purchase and suggested we look for someone who might fund this purchase. Thanks to a grant from The Casper Foundation we have the funds needed to order the software. We are anxiously are awaiting its arrival. The information in the Excel spread-

CCGS: HISTORICAL EVENTS CONTINUED FROM PAGE 3

1998	2000	2001
The Society published the <i>Chippewa County Wisconsin Cemetery Index</i> book in 1998, reprinting it in 2002. The book was the result of many hours of research by Society members who visited every cemetery in Chippewa County transcribing each and every found tombstone and later indexing the reports.	President: Pat Hebert The Society has had 5 individuals serve as President since its organization in 1980.	President: Mary Klawiter



Our extensive photography collection houses this picture of Spring Street in Chippewa Falls in 1896. Looking west there are many businesses, horse and wagons and many citizens posing for the camera.

LOCAL NEWS

STANLEY HISTORICAL SOCIETY

CONTINUED FROM PAGE 2

Following a potluck lunch, Richard Kozibal from Eau Claire provided a special presentation on the Palaces and Castles of Poland. Richard is a retired professor and is very knowledgeable on Poland as he makes regular trips to that country. On July 28-29, a local quilting group held their annual quilt show at the museum.

Our group is now gearing up to host the 2007 West Central Regional Convention of the Wisconsin Council for Local History on September 22. A highlight of that meeting will be a narrated bus tour of three country churches (including the oldest Russian Orthodox Church building in Wisconsin) in the morning. Following the tour an ethnic meal will be served. Attendees will be able to interact with fellow preservers of local history all during the day. Mark your calendars and plan to attend. Cost is \$20 and includes registration, morning coffee and pastries, bus transportation, admissions to three churches and lunch. An enjoyable day is guaranteed! Send registration and check to: SAHS, P.O. 142, Stanley 54768-0142.

Perhaps the biggest news is that we have torn down the house just south of our museum where our new 36'x70' exhibit and storage building will be built. We have received state approval of our plan, are currently soliciting bids and hope to start construction soon. The special exhibits in this new building will be a 1906 Cadillac that we recently received from the estate of a former member and the 1,400 beer taps that we received from another estate several years ago. We are excited about seeing this project completed as it has been on our drawing board for a long time. 🍷

President's Message CONTINUED FROM PAGE 4

sheet will be put into the new software and in addition all of the hand written detail about each artifact will be added. The software also will handle membership records, mailing labels for *The Eagle Speaks*, show what artifacts are on exhibit and what are in storage and many other helpful features.

We've had an increase in visitors the last several weeks. We feel we are the best-kept secret in Chippewa County and continue to work to make people aware of where we are and the exhibits we have in the museum. Our collection continues to grow with contributions from family members of Chippewa residents including some who don't live in the area anymore. We have artifacts from Dolores Beaudette as a result of her moving from her home to an apartment, Lawrence Crawley estate, Dorothy Holtz and Inez Holtz Kruger estate, Konsella Drug and Gene Harm's logging collection.

I had an interesting visit with Rosemary Broeren, a teacher at Park View who is the assistant curriculum coordinator for K-5. She is working on incorporating more local history in the various classes. The conversation stimulated me to activate our Education Committee to get them working with Rosemary, who has volunteered to be on the committee, to develop tours, traveling exhibits, and other helpful material for teachers to use. Watch for more on this.

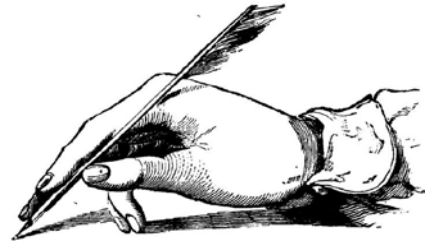
Got an interest in local history and a willingness to help out? We need you. There are lots of things to be done. We're here every Tuesday from 9:00 a.m. – 4:00 p.m. when we are open to the public and Thursday from 9:00 a.m. 12:00 noon for volunteers to work. 🍷 -Dave

2003	2005	2007
<p>President: Dennis Doughty</p> <p>The Society currently has 175 members. We are seeing a drop in our membership similarly reported by many genealogical organizations throughout the U.S. Use of the internet for genealogical research has been the major reason for this loss.</p>	<p>President: Roger Whiting</p> <p>At this time the Society is an affiliate member of the Wisconsin State Genealogical Society, the Federation of Genealogical Societies and the National Genealogical Society.</p>	<p>Starting in 2007, agreed to manage the Area History Center library on behalf of both organizations — CCHS and CCGS. This will be a responsibility delegated to the CCGS "librarian".</p>

Committees in sync!



Donations



Chippewa County Historical Society Committee Members

* Collection & Artifacts:

*Evalyn Frasch, Nancy Schuh,
Donovan Olson, Vicki Nelson,
Terri Ouimet

Photography Sub Committee:

*Lucyann LeCleur

* Building & Grounds:

Don Bichner

* Education:

*Arley Engel, Dave Gordon,
Gail Willi, Cathy Lee

Docent Sub Committee:

Lalie Boos, Pat Ahneman

* Exhibits:

* Arley Engel, Don Bichner,
Eugene Harmon, Nancy Schuh

Historic Markers Sub Committee:

* Tom Larson, Jim Schuh,
Arley Engel, Kurt Gaber

* Finances:

*Dave Gordon, Kathy Forsgren

* Membership:

*Shirley Liedl, Mary McKenna

Telephone Sub Committee:

*Mary McKenna

* Publicity:

*Jim Schuh, Betty Plombon,
Wayne Meyer

* Space Utilization:

*Don Baker

* Chairperson

Donations in Memory of:

From:	
John O'Neil	David & Jean Hancock..... \$100.00
	Norbert Tlachac.....25.00
Jeanne Reiter	Irene Woll.....10.00
Letha Gaier10.00
Kenneth Boos	Arley & June Engel.....5.00

Other Donations

From:

Spectrum Industries Inc.	\$100.00
Jeffrey Pritchard.....	10.00
DeVern & Joanne Cote	10.00
Russell Champion	10.00
Gail Willi	10.00
Arlyn Colby.....	20.00

From Visitors:

.....	\$12.50
.....	7.00
.....	8.00
.....	28.00
.....	4.30
.....	25.00
.....	25.00
.....	8.00
.....	18.00
.....	12.00

Grant:

Casper Foundation	\$800.00
-------------------------	----------

Ancient History in Cadott's Riverview Park CONTINUED FROM PAGE 3

Three of the signs were donated by the Cadott Economic Development Corporation and one sign by the McConville family. A park plot map interpretive sign, designed by Ben Polzin and donated by the Lions Club, will assist visitors in locating signage.

In a 2004 e-mail to Judy Gilles, Dr. Myers expressed some of his hopes for the impact of these signs. Myers hopes they will help to build community involvement and awareness of the importance of stewardship in preserving local history. This place is "our special place." He would like to see us increase each individual's appreciation of Cadott's unique geological history and his/her responsibility for preserving it.

With the arrival of warm weather take some time to visit the park and read up on our ancient history. Consider including in your plans a stop at one of our excellent local eating establishments to pick up a picnic lunch to enjoy at our beautiful park. 🍷

Ben Franklin

Better Quality for Less
15 W. Grand Ave » Chippewa Falls



Lucy's
Delicatessen
Eatery • Market • Wine
715-720-9800 117 N. Bridge St., Chippewa Falls

MASON SHOE OUTLET STORE

Men's & Women's Name Brand
Dress—Casual—Work
301 Bridge St. • Chippewa Falls

Seyforth's
Camera & Studio
Spring St. • Chippewa Falls
723-6047

GORDY'S
True Value.
Help Is Just Around The Corner
DOWNTOWN & LAKE WISSOTA

Pederson—Volker
FuneralChapel
Wm. Volker • Stacy Pickerign
715-723-4649

Mega!
foods • liquor

BOHL AND PROULX PLUMBING INC.

SPECTRUM INDUSTRIES INC.

1600 Johnson St. • Chippewa Falls, WI
Phone: 715-723-6750
Fax: 715-723-9002
Email: spectrum@spectrumfurniture.com
Web: www.spectrumfurniture.com

WILEY B. James Colbert
LAWs.c. Charles G. Norseng
ATTORNEYS AT LAW Steven R. Cray
119 1/2 N. Bridge St. Heather M. Hunt
Chippewa Falls, WI
715-723-8591 Teresa Germain



Plumbing
Service
Water Systems
Chippewa Falls:
723-9655
Eau Claire:
832-4795



Hwy. 124 N. • Chippewa Falls
Visit us at leinie.com

**Tour a Historic
Brewery**
Mon-Thur & Sat: 9 am-5 pm
Fri: 9 am-8 pm
Sun: 11 am-4 pm
Reservations recommended.
1-888-LEINIES

NB Northwestern Bank

We've Got It All . . .
Free Checking to Internet Banking
Chippewa Falls • 723-4461

Member FDIC www.northwesternbank.com

KELL CONTAINER



GREAT NORTHERN CORPORATION
421 Palmer St. • Chippewa Falls, WI
POP Displays
Shipping Containers
Inner Packaging
Chip Partitions

CHIPPEWA COUNTY ABSTRACT & TITLE CO., INC.

18 W. Spring St. • Chippewa Falls
715-723-3747
info@chippewacountyabstract.com

HORAN Funeral Home

420 Bay St..
Chippewa Falls
723-4404

**THESE BUSINESSES
SUPPORT OUR
NEWSLETTER**
Stop by and let them know how
much you appreciate it.

GORDY'S County Market

Low Prices Everyday!

Downtown Chippewa Falls Open 24 hrs
Lake Wissota 6am-Midnight
Eau Claire Birch St. Open 24 hrs



CHIPPEWA COUNTY HISTORICAL SOCIETY
AREA HISTORY CENTER
123 ALLEN ST.
CHIPPEWA FALLS, WI 54729-2898
715-723-4399

Non-profit Organization
U.S. Postage
PAID
Permit No. 403
Chippewa Falls, WI 54729

Address Service Requested

THE EAGLE SPEAKS



SEPTEMBER 2007

Preserving Your Past — For Future Generations