

THE EAGLE

CHIPPEWA COUNTY HISTORICAL SOCIETY



SPEAKS

MAY 2008

"OLD ABE"

Inside this Issue:

The Past Here Again	1
Cadott Area Historical Society	6
Calendar	3
Committee Members	6
Donations.....	5
Membership Form.....	5
President's Letter.....	4
Stanley Area Historical Society	2
Volunteer Profile.....	3



The Past Here Again in Allen Park

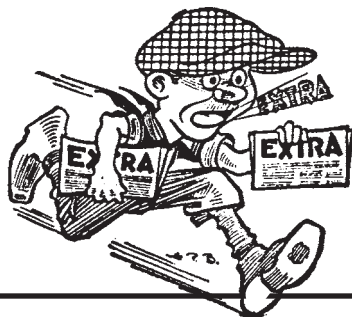
ARLEY ENGEL

We just finished our spring fling during the second week of May at Allen Park on Duncan Creek in Chippewa Falls. This is the historic site where the main east and west railroad tracks passed through Chippewa Falls. The big cement abutment in the center of Allen Park is a remnant of the rail line — where it passed over Duncan Creek through the park, then crossed the Chippewa River to the Southside (French Town) then on east to Cadott, Boyd, Stanley and on to the eastern part of our state. It is believed that this site was also a popular gathering area for the local indian tribes at the confluence of Duncan Creek and the Chippewa River below the falls on the Chippewa.

Our crew of volunteers from the Chippewa County Historical Society and the Chippewa County Genealogy Society with some extra help from my Farmers Breakfast friends set up tent on Monday, May 5th. I had already taken my 32 foot tandem trailer in on Sunday, May 4th. This trailer is filled with antique farming and lumbering tools. We had 2 enclosures that are 10 feet wide by 20 feet long, one supplied by Chuck & Charlene Card and I thank them for the use of their enclosure.

The *Past Passed Here* is a display of our Historic Past layed out to teach the 4th grade

CONTINUED ON PAGE 2



Keep Thinking Spring!

July 15

Board of Directors meeting
9:15 a.m. History Center

LOCAL NEWS

STANLEY HISTORICAL SOCIETY

DAVID JANKOWSKI, REPORTER

Greetings! The long winter has been used to work on our 2008 exhibits, do a lot of filing, sorting, and research on various topics. The 2008 exhibits are beginning to emerge and they will be ready for viewing the weekend after Memorial Day. This year our special exhibits will feature the Town of Worden and the 1958 tornado that was very destructive in this area. It was the same tornado that devastated Colfax and did considerable damage in the area around Irvine Park in Chippewa Falls. Although efforts to research the areas to be covered in this year's exhibits, and the gathering of pictures and articles started coming in slowly, people have really come forward and the exhibits are going to be very interesting.

Our organization has taken another leap of faith and voted at our April 28 quarterly meeting to begin construction immediately on another building to house our 1906 Cadillac and provide a great deal of storage space. The building will include a ground level and a loft for storage of artifacts. We never have enough room for donated items! We have awarded contracts for cement work/main structure and will be working on the project until our funds on hand run out. We anticipate being able to complete the cement work and get the building totally framed and roofed with what funds we have. That will allow beginning use of the building even if it isn't totally completed. After the framing, the electrical work needs to be completed before it is insulated and sheet rocked. We are installing in floor heat coils so if in the future we want to heat the building we will be able to do so. Our experience with in floor heat in our 2002 addition has been so positive that this was the desire of the membership.

CONTINUED ON PAGE 6



Arley Engel



Joe Joas and Eleanor

COVER STORY CONTINUED

children of the Chippewa Falls Area Schools in a hands on way, about our historic past. I will take you on a tour of the photos we had in the 2 enclosures. We start with a Birds Eye View of Chippewa Falls — the year is 1907, the population is 12,000 — on this photo are 4 bridges across the mighty Chippewa River. Starting at the west side, there is a railroad bridge in the Packerland (Pregent Buildings) area. This rail traveled along the south and east banks of the Chippewa River from Eau Claire, this site on the north side of the river was home to the Boom Tire and Rubber Company where they built 750 tires and 900 tubes per day, from 1918 to 1926. Across the then Highway 16 (Wheaton Road) was the Sugar Beet Factory, a large building on the site of our water department today. This plant could process up to 600 tons of beets per day into crystal sugar. There were 7 rail lines into this plant. Heading east from this area we see an auto and truck bridge it also included a rail for the electric street car. On the north end of this bridge is the Sheeley House, with R. B. Clark grain company a little to the west. This is the site of the 3 big Quonset buildings today.

Heading east on River Street takes us to the railroad bridge across the Chippewa River located east of the present day NSP (Xcel Energy) power house and dam. This area was home to the Chippewa Lumber and Boom Company. The largest sawmill in the world under one roof at the time. To process the timber after it was sawn to size, it was taken by rail to the flats by a Little Dinky Narrow gauge engine. Today a bike trail runs in this area from Curt Street along the river bank to the flats.

Chippewa Lumber and Boom Company had their planing mill in the flats area. That explains the sawdust pile at the Timber Terrace Golf Course site. Another railroad bridge passed north to the flats and on north to Norma where it split with one rail heading east to Jim Falls and the other going north to Bloomer. The Birds Eye View map shows the location of many buildings including Leinenkugel's Brewery, The Northern Wisconsin State Fair Grounds, Chippewa Falls Senior High School 1906, McDonell High School 1907, The Scheeley House, The Cook Rutledge Mansion, Chippewa Lumber and Boom Company's Sawmill and the Planing Mill plus all kinds of dimension lumber stacked and dried on the flats. This is just one photo of the 35-40 photos we had on display. Once through the Historic Photo tour you ended up having a good idea of what Chippewa Falls was like as the *Past Passed Here*.

We took photos of many of the school kids riding on our harnessed buffalo, but the most impressive to me were the ones taken of the senior citizens that attended, namely John Butak 90, Joe Joas 93 and his friend Eleanor, plus one of our docents from the History Center Lalie Boos 87, that's an average of 90 years (ride'm cowboy!) It still makes a little tear fall to think our friend Eugene Harm could not attend this year due to an illness. He has been in St. Joseph's Hospital for over 2 weeks now. Get well soon Gene. That's all for now from "Engel's little House on the Wheaton Prairie."

P.S. Thanks for all the help from the volunteers at the history and genealogy departments at our center 123 Allen Street. 🐾



Lalie Boos



A VOLUNTEER PROFILE
MARY MCKENNA

Lalie

Dynamite comes in small packages and it could best describe our human dynamo, Lalie Boos. She wears a badge that says she is a tour guide, but she is so much more. Each Tuesday she comes prepared to keep the interior of the History museum as clean as her own home. She dusts, vacuums, scrubs floors, cleans restrooms and her dust rag scoots across every crevice as she chases those “dust bunnies” and “spider webs” that don’t have a chance with Lalie’s eagle eyes.

While she could keep busy all day with her varied tasks, she stops on a dime to give a detailed tour complete with whimsical tales and stories from her memory bank. Her only complaint was that the hour-long tour may not produce a stipend in the donation box. While it isn’t mandatory, it is hoped visitors might drop something in to aide in the operation of the center. Lalie also is called upon to answer the telephone and she pitches in whenever there is a special event: setting up, serving and cleaning up. She is worth her weight in gold.

She was born in Bloomer, Wisconsin to William and Elizabeth Geissler and was the oldest of 3 children. She attended 1st through 3rd grade at Notre Dame school until the family moved to a farm in Howard. She then attended 18 Mile Creek School where all 8 grades were taught by one teacher. High school graduation came in 1938 from Chi Hi. Lalie then went to live with her aunt and uncle, working for her room and board at the Woolen Mill doing hand sewing on coats and army overcoats until she was laid off. She then got into the N.Y.A., a youth plan where they were taught how to sew on power machines.

On November 25, 1941 she became Mrs. Arthur Boos. They married on November 25, 1941 at St. Charles Catholic Church in Chippewa Falls. In 1942 he was drafted into the Air Force, missing the birth of their first son, Arthur Jr. who was born after he left to serve. When her son reached 2 years of age, Lalie went to work at Presto Mfg. in Eau Claire. Her husband, Art, came home in 1946 and worked for Gutknecht’s as a sausage maker. In 1948 they moved to a small farm in Eagle Point. They had 7 more children, 5 boys and 2 girls: Thadeus, Donna, Victoria, Stephen, Andrew, Charles and Daniel.

Lalie speaks warmly of her love of farming; stating they started first with one cow, then 3 cows and so on. As she raised her children and worked on the farm, she found time to be active in the 4-H program, serving as an assistant leader for her club and as a project leader for 34 years. In addition Lalie started a drapery shop in her home in 1972 and sewed for Korger’s Decorating & Furniture and she still sews for them today. She is member of Trout Creek HCE Club and GFWC Eagle Point Women’s Club. She also belongs to 2 card playing clubs. All this besides volunteering faithfully at the Historical Center since 1993.

Lalie & Art have 22 grandchildren and 36 great-grandchildren and 2 great-great grandchildren. This loving generous grandma welcomes all of them into her home every Sunday afternoon and Holidays for a homemade meal and she says, “they do come”. A lifetime of hard work and community involvement has spilled over into our luck to have Lalie donating so much of herself to our center. Saying “thank you” doesn’t seem enough to show our appreciation for her service. 🍷

CALENDAR

Place these dates on your calendar

June 17

No Board of Directors meeting

July 15

Board of Directors meeting
9:15 a.m. History Center

July 22

History Coalition
1:00 p.m. History Center

August 19

Board of Directors meeting
9:15 a.m. History Center

September 16

Annual Membership Meeting
5:30 p.m. Picnic Irvine Park

The Eagle Speaks is published quarterly by the Chippewa County Historical Society, a non-profit organization established to promote and stimulate historical interest in Chippewa County, Wisconsin.

Mail any comments or future articles to 123 Allen St., Chippewa Falls, WI 54729. 715-723-4399.

Chippewa County Historical Society
123 Allen St., Chippewa Falls, WI
Open on Tuesdays | 9am-4pm

FEATURED ARTIFACT



Medal of Honor

Sgt Charles E. Mower's Congressional Medal of Honor is on display in the Military Room. Sgt Mower was killed in action 11/3/44 Capocan, Leyte Phillipine Island. Sgt Mower's squad leader was killed in an attack on a Japanese position. Sgt. Mower took command. Crossing a stream he was severely wounded but directed his squad to destroy two machine guns and numerous riflemen. The Japanese turned the full force of their gunfire on him and killed him still urging his men on. His gallant initiative and heroic determination aided materially in successful completion of his squad's mission.

A Message From Your President



I think spring is finally here. Looking out the History Center window as I write this I see green grass and yellow dandelions on the school lawn across the street. It's been busy here at the History Center as usual. We continue to make progress on computerizing our collections and photographing our photo collection. We had special guests in March as Lalie Boos brought the Eagles Point Women's Club to the History Center for their monthly meeting and tour. We welcome groups to come to the History Center and use our conference room for their meeting and then take a tour.

The *Past Passed Here* is in full swing. Our exhibitor Arley Engle has done his usual great job. Two white tents feature photographs and memorabilia from the trader, lumbering days. His tool trailer (it must be 30 feet long) features a history of tools and other artifacts. The fourth graders of the Chippewa Falls School District come to talk with Arley and others about the Historical Society's displays and get their passports stamped. Then they're off to see the encampment of the enactors portraying life in Chippewa in the early days. Over the three days the school children come to Allen Park, they compete in several fun competitions with the class winners returning on Saturday morning for the school championship. The festival is open to the public on Thursday and Friday afternoons and on Saturday. It is a great event.

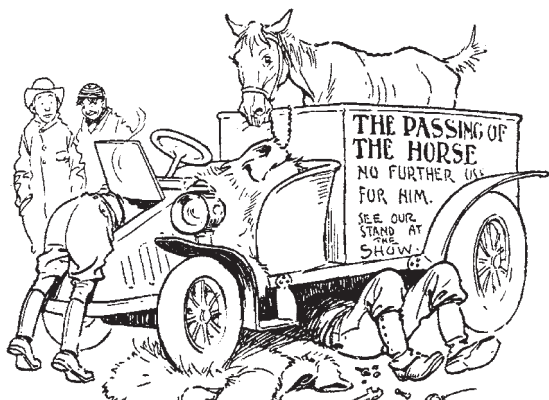
Chippewa Falls Main Street has been the producer of this great four day festival and has approached the Historical Society about becoming the event producer. I hope our Education Committee and Board of Directors will be willing to take over the production of this event. One part of our mission is to work with the schools to make students aware of our area's rich history. We are fortunate to have Jim Schuh and Terri Stahr on our Board of Directors and I hope they will be willing to help run this event with our Education Committee. Cath Lea who is the school district person who plans the school kids attendance is a member of our Education Committee. If we do take this event on we will be looking for lots of help from our members. Watch for news of our decision.

Another event that we are working on with the School District is the 8th Grade History Day in May. Jim Schuh has volunteered to present our Chippewa Memories slide show to six different groups of 8th graders. The 30 minute presentation takes the students through a picture history of the Chippewa area from the Indian settlers to present. The pictures show some Chippewa landmarks then and now and the students get a 10 question test about what they learned.

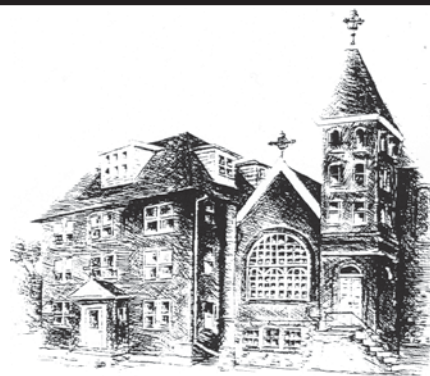
The Council for Arts, History and Humanities continues to meet and has decided to shorten their name to History Coalition. They have developed a mission statement: "Preserve and promote the history of the region". The group has decided history is their main focus. We continue to dream about a new museum some day. They are developing a poster that can be displayed in local retail and others businesses to publicize all of the participating organizations.

Well that's it from 123 Allen Street. I hope to see you at the History Center this summer. Enjoy the great Wisconsin summer. Dave

Donations



MEMBERSHIP FORM



Donations in Memory of:

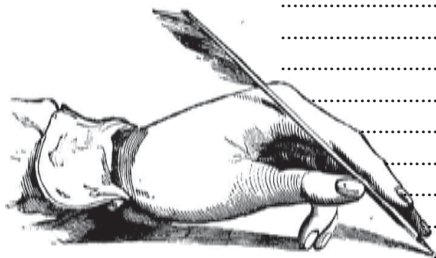
	From:	
Mary Lou Maloney, Bernice Ione Dekan	Arley & June Engel.....	\$10.00
Richard Welke, Roberta Wermund	Arley & June Engel.....	10.00
Leona Steinmetz	Arley & June Engel.....	5.00
Mary Lou Maloney	Donald L. & Dolores L Bichner.....	25.00
Mary Ann Kraft	David & Shirley Pressler.....	10.00
Charles B. Wiltrout	Arley & June Engel.....	5.00
Robert W. White	Arley & June Engel.....	5.00
Bruce Arthur Hopkins	Arley & June Engel.....	5.00
Bruce Arthur Hopkins	Kathy Forsgren.....	5.00
Bruce Arthur Hopkins	History Center.....	10.00
Bruce Arthur Hopkins	Donald L. & Dolores L Bichner.....	25.00

Other Donations

	From:	
John & Lorraine Pontius		\$25.00
David & Shirley Pressler.....		5.00
Thomas K. & Laura A. Larson.....		5.00
Dan & Jacque Daniel.....		10.00
Gale & MaryAnn Engel.....		5.00
Heidi Rushmann		20.00
Eagle Point Women's Club		25.00
Julie P. & Wm. Blackburn		10.00
Susan DeLong		10.00
Anonymous.....		32.30

From Visitors:

.....	\$2.00
.....	7.00
.....	7.00
.....	2.00
.....	10.00
.....	10.00
.....	4.00
.....	8.00
.....	5.00
.....	15.00
.....	15.00
.....	5.00
.....	55.00
.....	10.00



NAME

ADDRESS

CITY

STATE ZIP

TELEPHONE:

Types of Memberships:

- Individual (1 Year) \$10
- Family (1 Year) \$15
- Contributing Member \$50
- Life Member (Individual)..... \$125
- Life (Couple) \$175
- Extra Donation _____

MAIL TO:

Chippewa County Historical
Society
123 Allen Street
Chippewa Falls, WI 54729



Then and Now

The Chippewa Boom & Lumber Offices on the corner of Bay and River Street now Higher Grounds



Chippewa County Historical Society Committee Members

❖ Collection & Artifacts:

* Nancy Schuh, Evalyn Frasch, Donovan Olson, Vicki Nelson, Terri Ouimet

Photography Sub Committee:

*Lucyann LeCleir

❖ Building & Grounds:

Don Bichner

❖ Education:

*Arley Engel, Dave Gordon, Gail Willi, Cathy Lee

Docent Subcommittee:

Lalie Boos, Pat Ahneman

❖ Exhibits:

* Arley Engel, Don Bichner, Eugene Harm, Nancy Schuh

Historic Markers Sub Committee:

*Tom Larson, Jim Schuh, Arley Engel, Kurt Gaber

❖ Finances:

*Dave Gordon, Kathy Forsgren

❖ Membership:

*Shirley Liedl, Mary McKenna

Telephone Subcommittee:

*Mary McKenna

❖ Publicity:

*Jim Schuh, Betty Plombon, Wayne Meyer

❖ Space Utilization:

*Don Baker

* Chairperson



LOCAL NEWS CONTINUED

Stanley Historical Society CONTINUED FROM PAGE 2

Fund raising for the new building continues. We are pleased to have been selected as a recipient of an Adler Clark Electric Community Commitment Foundation award in the amount of \$3,000. We have a considerable number of members who reside in Clark County and who are Clark Electric customers. We are still waiting to hear back from a number of other corporations or large businesses that have been approached regarding a donation to our project.

On the weekend of June 14 and 15, our museum will be open from 10:00 a.m. to 4:00 p.m. each day. That is the weekend of the Stanley Rodeo and the Highway 29 Partnership is also sponsoring a "Sociability Run" on the former Yellowstone Trail. Thirteen car clubs have been invited to tour the towns from Cadott to Curtiss on those days. In Stanley we will be having our 1906 Cadillac on display at our museum along with a number of other antique vehicles.

On June 21, we invite everyone to a very interesting and entertaining presentation that will feature Jerry Apps, a prolific Wisconsin author, who will present a program entitled the "Lighter Side of Life in the Country." He has authored a book by the same title. Mr. Apps will be partly sponsored by the Wisconsin Humanities Council. The time of the presentation will be at 2:00 p.m.—so save the date and plan to attend.

Other weekends from May 31 to Labor Day, our museum opens Saturdays and Sundays from 1:00-4:00 p.m. School groups, scout organizations and organizations such as Red Hatters are welcome anytime. Call 644-5880 for an appointment. Suggestions for other points of interest or things to do in the Stanley area will be gladly provided on request. Make it an hour, or make it a day's outing, there are plenty of things to do. Have a good summer and come see us. 🍷

CADOTT AREA HISTORICAL SOCIETY

JEANINE MAREK, PRESIDENT

This has truly been an exciting year for our society! We have put up a new building to house all our big items such as farm implements, commercial butter churn, sleigh, etc. And it is paid for. We even have electricity to the building. The people of the area have backed us with encouragement and donations to make this possible, along with years of projects to raise money and save for this plan to build in the future. And the future has finally arrived!! We are all so happy and proud.

At the present time we are preparing for Heritage Days. The 4th, 5th and 6th grades of both schools will visit the museum. In the first building Jean Cronquest has a demonstration on "Bottles." In the second building Pat Newman will point out past and present uses of milkweed.

On June 7, the CAHS plans to host a barn dance in the new building from 2:00 - 5:00 pm. This is a thank you to the community for all their donations and help. We will also have light refreshments, coffee and punch. At the Dairy Days in the morning of the same day, June 7, we will also be present. We are open 9:00 am - 4:00 pm all Mondays except on holidays. 🍷

THESE BUSINESSES SUPPORT OUR NEWSLETTER Stop by and let them know how much you appreciate it!

Ben Franklin

Better Quality for Less
15 W. Grand Ave » Chippewa Falls



MASON SHOE OUTLET STORE

Men's & Women's
Name Brand
Dress—Casual—Work
301 Bridge St. • Chippewa Falls

Seyforth's
Camera & Studio
Spring St. • Chippewa Falls
723-6047

GORDY'S
True Value
Help Is Just Around The Corner
DOWNTOWN & LAKE WISSOTA

Mega!
foods • liquor

SPECTRUM
INDUSTRIES INC.
1600 Johnson St. • Chippewa Falls, WI



BOHL AND PROULX PLUMBING INC.

Plumbing Service • Water Systems
Chippewa Falls: 723-9655
Eau Claire: 832-4795

WILEY B. James Colbert
LAW s.c. Charles G. Norseng
ATTORNEYS AT LAW Steven R. Cray
119 1/2 N. Bridge St. Heather M. Hunt
Chippewa Falls, WI Teresa Germain
715-723-8591

Phone: 715-723-6750
Fax: 715-723-9002
Email:
spectrum@spectrumfurniture.com
Web:
www.spectrumfurniture.com



Hwy. 124 N. • Chippewa Falls
Visit us at leinie.com

**Tour a Historic
Brewery**
Mon-Thur & Sat: 9 am-5 pm
Fri: 9 am-8 pm
Sun: 11 am-4 pm
Reservations recommended.
1-888-LEINIES



We've Got It All ...
Free Checking to Internet Banking
Chippewa Falls • 723-4461
Member FDIC www.northwesternbank.com



GREAT NORTHERN CORPORATION
421 Palmer St. • Chippewa Falls, WI
POP Displays
Shipping Containers
Inner Packaging
Chip Partitions

CHIPPEWA COUNTY ABSTRACT & TITLE Co., INC.

18 W. Spring St. • Chippewa Falls
715-723-3747
info@chippewacountyabstract.com

HORAN Funeral Home

420 Bay St..
Chippewa Falls
723-4404

212 N. Bridge St.
Chippewa Falls **715-738-1111**



GORDY'S County Market

Low Prices Everyday!

Downtown Chippewa Falls Open 24 hrs	Lake Wissota 6am-Midnight	Eau Claire Birch St. Open 24 hrs
---	------------------------------	--

community owned, community focused
**CITIZENS
STATE BANK**
Cadott 304 N. Main St. Cadott, WI 715-289-4253
Chippewa Falls 15036 County Hwy S Chippewa Falls, WI 715-726-2111
Lake Wissota 17153 County Hwy J Chippewa Falls, WI 715-720-3670

|| *Pederson—Volker*
|| **Funeral Chapel**
|| Wm. Volker • Stacy Pickerign
|| 715-723-4649

CHIPPEWA COUNTY HISTORICAL SOCIETY
AREA HISTORY CENTER
123 ALLEN ST.
CHIPPEWA FALLS, WI 54729-2898
715-723-4399

Non-profit Organization
U.S. Postage
PAID
Permit No. 403
Chippewa Falls, WI 54729

Address Service Requested

THE EAGLE SPEAKS



MAY 2008

Preserving Your Past — For Future Generations